

**Washington University in St. Louis**  
**Office of Sponsored Research Services**

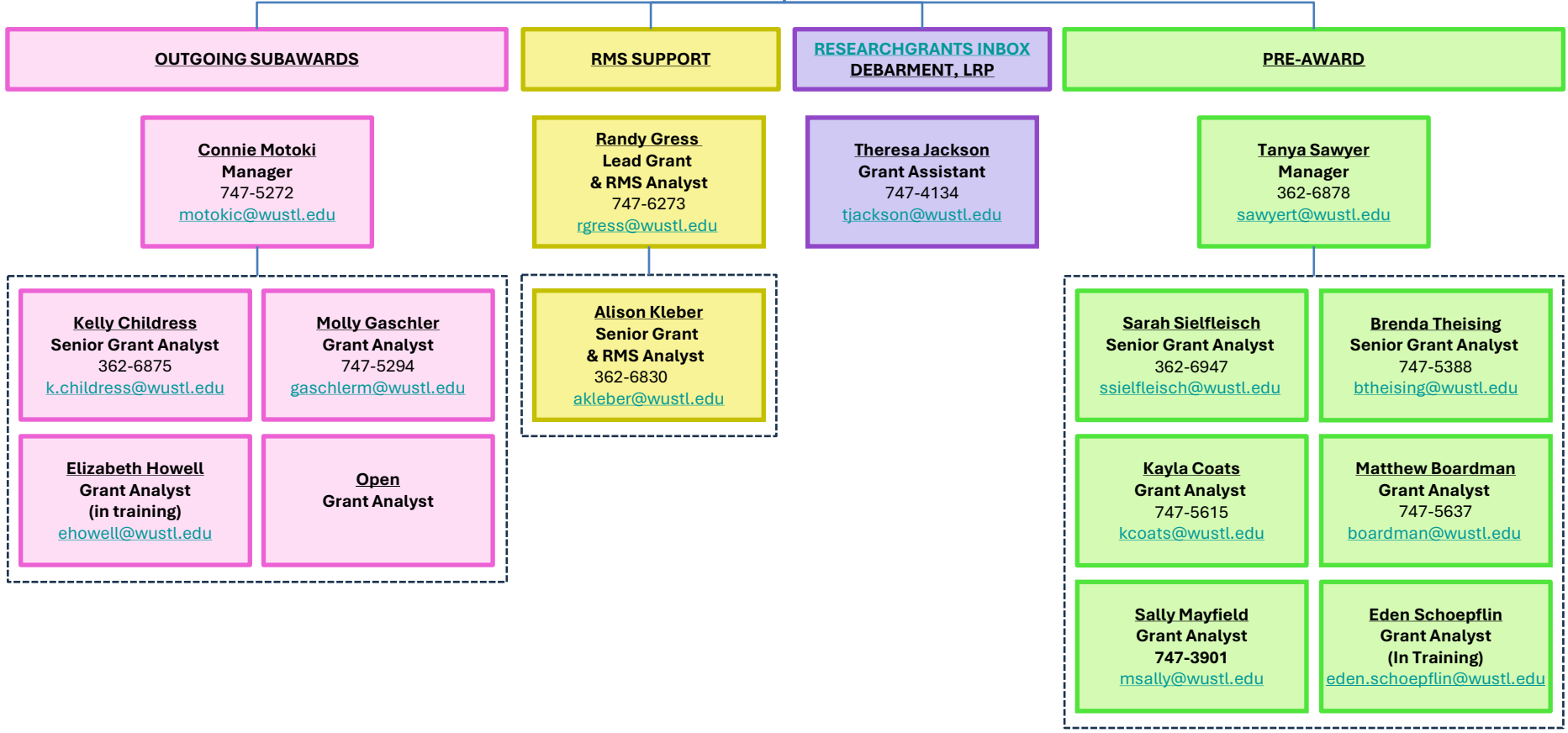
One Brookings Drive, MSC 1054-87-1300  
St. Louis, MO 63130

[OSRS](#)

**Krystina Gross**  
Assoc. VC for  
Fin & Sponsored Projects  
935-2073  
[kgross@wustl.edu](mailto:kgross@wustl.edu)

**Maureen Patterson**  
Admin. Assistant  
747-5386  
[pattersonm@wustl.edu](mailto:pattersonm@wustl.edu)

**Teri Medley**  
Director  
747-4444  
[medleyt@wustl.edu](mailto:medleyt@wustl.edu)



**OUTGOING SUBAWARDS**

**RMS SUPPORT**

**RESEARCHGRANTS INBOX  
DEBARMENT, LRP**

**PRE-AWARD**

**Connie Motoki**  
Manager  
747-5272  
[motokic@wustl.edu](mailto:motokic@wustl.edu)

**Randy Gress**  
Lead Grant  
& RMS Analyst  
747-6273  
[rgress@wustl.edu](mailto:rgress@wustl.edu)

**Theresa Jackson**  
Grant Assistant  
747-4134  
[tjackson@wustl.edu](mailto:tjackson@wustl.edu)

**Tanya Sawyer**  
Manager  
362-6878  
[sawyer@wustl.edu](mailto:sawyer@wustl.edu)

**Kelly Childress**  
Senior Grant Analyst  
362-6875  
[k.childress@wustl.edu](mailto:k.childress@wustl.edu)

**Molly Gaschler**  
Grant Analyst  
747-5294  
[gaschlerm@wustl.edu](mailto:gaschlerm@wustl.edu)

**Elizabeth Howell**  
Grant Analyst  
(in training)  
[ehowell@wustl.edu](mailto:ehowell@wustl.edu)

**Open**  
Grant Analyst

**Alison Kleber**  
Senior Grant  
& RMS Analyst  
362-6830  
[akleber@wustl.edu](mailto:akleber@wustl.edu)

**Sarah Sielfleisch**  
Senior Grant Analyst  
362-6947  
[ssielfleisch@wustl.edu](mailto:ssielfleisch@wustl.edu)

**Brenda Theising**  
Senior Grant Analyst  
747-5388  
[btheising@wustl.edu](mailto:btheising@wustl.edu)

**Kayla Coats**  
Grant Analyst  
747-5615  
[kcoats@wustl.edu](mailto:kcoats@wustl.edu)

**Matthew Boardman**  
Grant Analyst  
747-5637  
[boardman@wustl.edu](mailto:boardman@wustl.edu)

**Sally Mayfield**  
Grant Analyst  
747-3901  
[msally@wustl.edu](mailto:msally@wustl.edu)

**Eden Schoepflin**  
Grant Analyst  
(In Training)  
[eden.schoepflin@wustl.edu](mailto:eden.schoepflin@wustl.edu)

**Effective 4/7/2025**

See next page for  
Pre-award Department Assignments.

## Office of Sponsored Research Services – Preaward Department Assignments

<p><b><u>Brenda Theising</u></b> Senior Grant Analyst 747-5388 <a href="mailto:btheising@wustl.edu">btheising@wustl.edu</a></p> <ul style="list-style-type: none"> <li>▪ Preaward</li> </ul> <p>A&amp;S- Mildred Kemper Art Mus A&amp;S- Physics Brown School (Social Work) CAPS CCS-Ctr for Clinical Studies CFU-Central Fiscal Unit CFU- Student Affairs Comparative Medicine Cont. Med Education DOM- ICTS DOM- Infectious Diseases Engineering- Admin/Finance Engineering- Biomedical Engineering- Computer Science Engineering- Dean's Office/ Student Services Engineering- Mechanical/Civil Engineering -System Sciences/Math/Electrical Genetics Human Resources Institute of Informatics McDonnell Genome Institute Misc. Grad School Orthopedic Surgery School of Public Health</p>	<p><b><u>Matthew Boardman</u></b> Grant Analyst 747-5637 <a href="mailto:boardman@wustl.edu">boardman@wustl.edu</a></p> <ul style="list-style-type: none"> <li>▪ Preaward</li> </ul> <p>Biochemistry Ctr for Genome Sciences DOM- Business Office DOM- Bioorganic Chemistry DOM- Ctr Behavioral Research &amp; Gen Med Sciences DOM- Ctr for Human Nutrition DOM- Gastroenterology DOM - Geriatric/Gerontology DOM- Hematology &amp; Hospitalists Program DOM- Med. House Staff DOM- Metabolism Endocrinology &amp; Proteomics Core DOM- Nephrology DOM- Oncology &amp; Bone Marrow Transplant DOM- Pharmacogenomics DOM- Rheumatology DOM- VA Hospital DOM- Weight Management Neurosurgery Pathology</p>	<p><b><u>Kayla Coats</u></b> Grant Analyst 747-5615 <a href="mailto:kcoats@wustl.edu">kcoats@wustl.edu</a></p> <ul style="list-style-type: none"> <li>▪ Preaward</li> </ul> <p>A&amp;S-Earth &amp; Planetary Sciences A&amp;S-Psychology Biostatistics Cancer Center CFU-Govt/Comm Relations Emergency Medicine Entrepreneurship/CSDP HRPO Medical Education/Curri Medical School Misc (includes Pfizer) Ophthalmology Psychiatry Radiation Oncology Radiology Surgery</p>	<p><b><u>Eden Schoepflin</u></b> Grant Analyst (In Training) <a href="mailto:eden.schoepflin@wustl.edu">eden.schoepflin@wustl.edu</a></p> <ul style="list-style-type: none"> <li>▪ Preaward</li> </ul>	<p><b><u>Sarah Sielfleisch</u></b> Senior Grant Analyst 362-6947 <a href="mailto:ssielfleisch@wustl.edu">ssielfleisch@wustl.edu</a></p> <ul style="list-style-type: none"> <li>▪ Preaward</li> </ul> <p>Anesthesiology DOM- Allergy &amp; Immunology DOM- Bone &amp; Mineral DOM- Palliative Medicine DOM- Cardiology DOM- Dermatology DOM- Pulmonary Molecular Microbiology Neuroscience Obstetrics &amp; Gynecology Pediatrics</p>	<p><b><u>Sally Mayfield</u></b> Grant Analyst 747-3901 <a href="mailto:msally@wustl.edu">msally@wustl.edu</a></p> <ul style="list-style-type: none"> <li>▪ Preaward</li> </ul> <p>Arts &amp; Sciences A&amp;S- Anthropology A&amp;S- Architecture (Sam Fox) A&amp;S- Biology A&amp;S- Chemistry A&amp;S-Math A&amp;S-Statistics &amp; Data Science A&amp;S- Weidenbaum Center Bernard Becker Library Business (Olin School) Cell Biology &amp; Physiology Ctr for Advanced Learning Ctr for Humanities DBBS Dev Biology Engineering- Energy Environment &amp; Chemical Gephardt Institute Institute for Public Health Law School Neurology (includes Ctr for Aging DIAN TTU) Occ. Therapy Olin Library Otolaryngology &amp; Audiology Physical Therapy</p>
---	---	--	--	--	--

Effective 4/7/2025